

UCSF Medical Center at Mission Bay

Local Workforce Report

November 10, 2011

Cindy Lima

Executive Director

Mission Bay Hospitals Project

Outline

1. Recap
2. Trade Name Call Opportunities
3. Progress to Date – Certified Payroll
4. Opportunities for Smaller Local Subcontractors
5. Other Community Engagement
6. Next Report

1. Recap

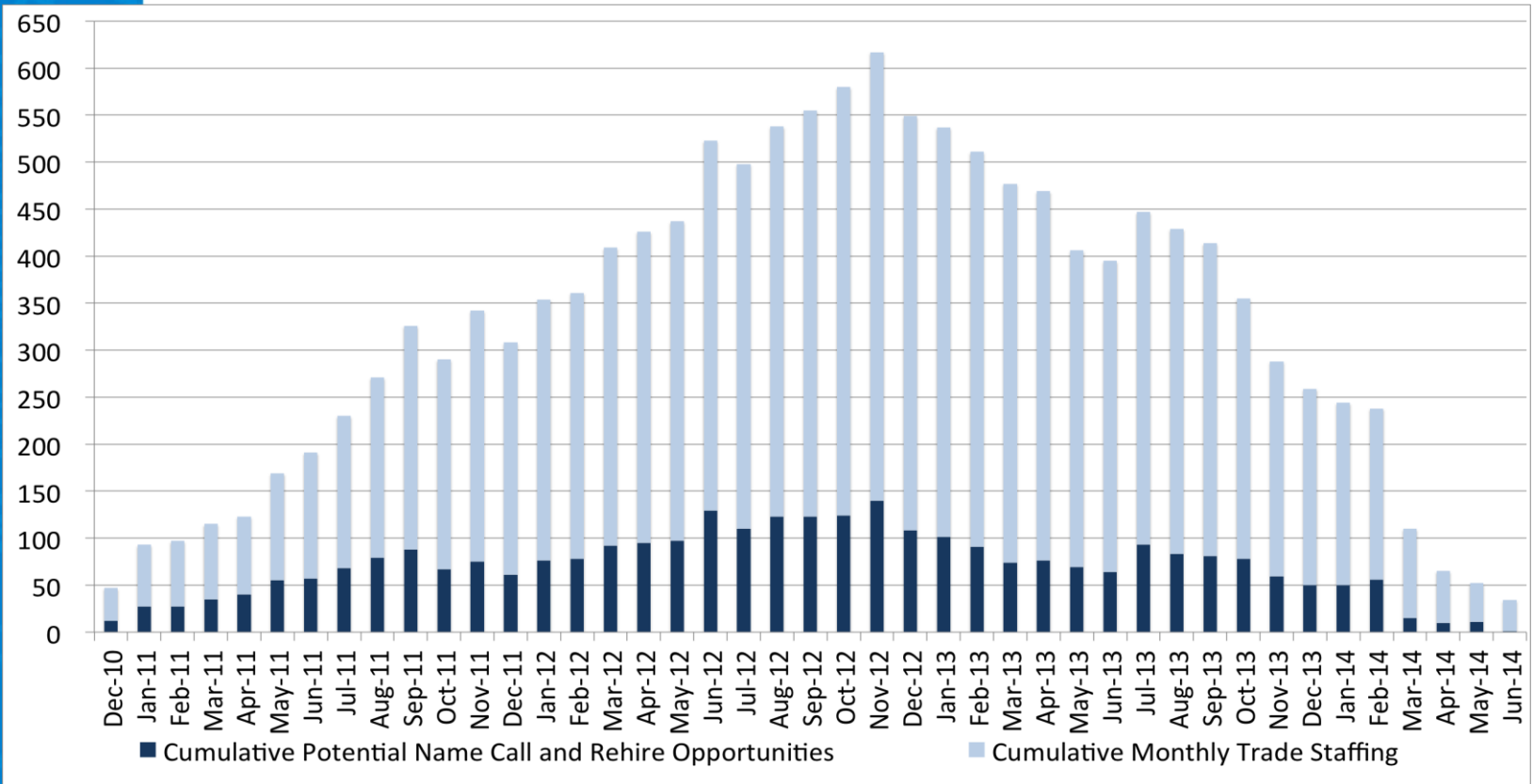
- **UCSF is firmly committed to creating jobs and opportunities for hiring SF residents to help build the Mission Bay Hospitals Project**
 - *UCSF will work with DPR Construction to ensure that qualified SF residents have access to jobs*
 - *UCSF will voluntarily work toward a goal of reaching 20% SF residents of the project total workforce in year one, followed by a 5% increase per year through completion. These goals if reached, would more than double UCSF's historical average.*

1. Recap (continued)

- **Prior meetings:**

- *UCSF working on implementation of newly organized workforce program*
- *In the interim, names can be submitted to “Construction Jobs” on form: “Submission of Ready, Able and Qualified Local Craftsperson”*
 - Available at: www.missionbayhospitals.ucsf.edu or in the ICDC
- *UCSF to prepare trade-by-trade name call opportunities, by month (subject to union dispatch procedures)*
- *UCSF will report on actual local hiring progress*

2.1 Overall Project Trade Name Call Opportunities



2.2 Trade Name Call Opportunities

UCSF Medical Center at Mission Bay Projected Potential Monthly Local Labor Name Call and Rehire Opportunities

November 10, 2011

UCSF Medical Center
at Mission Bay

TRADE	Dec-11	Jan-12	Feb-12	Mar-12	Apr-12	May-12	Jun-12	Jul-12	Aug-12	Sep-12	Oct-12	Nov-12
Sheet Metal	2	10	1	2	3	0	23	0	10	0	0	25
Plumbers	0	5	2	1	2	0	5	0	1	4	0	0
Ironworkers	0	0	0	1	0	0	2	0	0	0	0	0
Carpenters	1	7	3	9	0	3	0	0	1	4	1	0
Operators	0	0	0	0	0	0	0	1	1	1	0	0
Electrical	0	0	0	0	0	0	0	0	0	0	0	0
Glaziers	0	2	0	1	1	0	0	0	0	0	0	0
Masons	0	0	0	0	1	0	0	0	0	0	0	0
Painters	0	0	0	0	0	0	1	0	1	1	0	0
Laborers	0	0	0	0	0	1	1	2	1	0	0	0
Insulators/Fireproofers	1	0	0	1	0	0	0	0	0	1	0	0
Flooring	0	0	0	0	0	0	0	0	0	0	2	0
Heliport	0	0	0	0	0	0	0	0	0	0	0	0
Other	0	0	0	0	0	0	0	1	1	1	0	0
Elevator	1	0	0	0	1	0	0	0	0	0	0	0

3. Progress to Date – Certified Payroll

1. **Construction to date:** December 2010 through September 2011
 - *Local Headcount was 16%*
 - *Local Work Hours was 21%*
2. **Construction month:** Final September 2011 only
 - *Local Headcount was 17%*
 - *Local Work Hours was 19%*

3.1 Progress to Date – Construction Work (starting December 2010)

UCSF / Medical Center Mission Bay
 Community Construction Workforce Program Workforce Analysis
 Project reporting date: December 1 - September 30, 2011

Contractor	San Francisco Workers				Non-San Francisco Workers				Total Workforce	Total Work Hours
	SF Workers	Head Count %	SF Hours	Work Hrs %	Non-SF Workers	Head Count %	Non-SF Work Hours	Work Hrs %		
Acco	6	20%	1,493	23%	24	80%	4,872	77%	30	6,364
Anning Johnson	3	30%	277	36%	7	70%	497	64%	10	774
Berkel and Company	10	29%	2,570	20%	24	71%	9,975	80%	34	12,544
Broadway Mechanical	8	17%	3,820	26%	39	83%	11,026	74%	47	14,846
B.T. Mancini	3	18%	432	19%	14	82%	1,837	81%	17	2,269
CMC Rebar	0	0%	0	0%	40	100%	2,775	100%	40	2,775
Conco Pumping	0	0%	0	0%	17	100%	549	100%	17	549
Dees-Hennessey	4	13%	82	5%	27	87%	1,634	95%	31	1,716
Doyles	1	5%	192	4%	19	95%	4,212	96%	20	4,404
DPR	36	18%	12,123	23%	162	82%	40,865	77%	198	52,988
F Rogers	0	0%	0	0%	8	100%	85	100%	8	85
F3 & Associates	0	0%	0	0%	10	100%	851	100%	10	851
Floor Seal Technology	0	0%	0	0%	6	100%	78	100%	6	78
Jos. J. Albanese	3	10%	451	21%	42	90%	1,647	79%	45	2,097
O. C. Jones	0	0%	0	0%	60	100%	1,710	100%	60	1,710
Pacific Coast Steel	28	22%	5,402	25%	102	78%	16,642	75%	130	22,044
Pacific Erectors	2	7%	790	11%	25	93%	6,280	89%	27	7,070
Pribuss Engineering	1	25%	5	2%	3	75%	198	98%	4	203
Redwood City Electric	7	26%	2,651	30%	20	74%	6,188	70%	27	8,839
Rosendin Electric	9	28%	1,902	20%	23	72%	7,406	80%	32	9,308
Schuff Steel	28	24%	11,417	24%	91	76%	36,289	76%	119	47,707
Sheedy	4	40%	159	14%	6	60%	1,012	86%	10	1,171
Southland Ind.	3	6%	421	6%	44	94%	6,979	94%	47	7,400
Talus Construction	1	8%	52	3%	11	92%	1,625	97%	12	1,677
Totals To Date	157	16%	44,237	21%	824	84%	165,229	79%	981	209,466

3.2 Progress to Date – Construction Work (Month of September 2011 only)

Table Below Is For This Project Date: September 1 - 30, 2011

Contractor	San Francisco Workers				Non-San Francisco Workers				Total Workforce	Total Work Hours
	SF Workers	Head Count %	SF Hours	Work Hrs %	Non-SF Workers	Head Count %	Non-SF Work Hours	Work Hrs %		
Acco	6	32%	863	39%	13	68%	1,334	61%	19	2,196
Anning Johnson	3	30%	277	36%	7	70%	497	64%	10	774
Berkel and Company	0	0%	0	0%	0	0%	0	0%	0	0
Broadway Mechanical	5	17%	619	19%	24	83%	2,587	81%	29	3,206
B.T. Mancini	3	17%	352	20%	15	83%	1,385	80%	18	1,737
CMC Rebar	0	0%	0	0%	19	100%	509	100%	19	509
Conco Pumping	0	0%	0	0%	9	100%	199	100%	9	199
Dees-Hennessey	0	0%	0	0%	6	100%	56	100%	6	56
Doyles	1	13%	120	26%	7	88%	346	74%	8	466
DPR	17	17%	1,455	13%	86	83%	9,849	87%	103	11,304
F Rogers	0	0%	0	0%	2	100%	16	100%	2	16
F3 & Associates	0	0%	0	0%	2	100%	78	100%	2	78
Floor Seal Technology	0	0%	0	0%	4	100%	35	100%	4	35
Jos. J. Albanese	3	10%	259	21%	26	90%	950	79%	29	1,208
O. C. Jones	0	0%	0	0%	0	0%	0	0%	0	0
Pacific Coast Steel	13	21%	1,056	30%	49	79%	2,487	70%	62	3,543
Pacific Erectors	2	12%	316	16%	15	88%	1,702	84%	17	2,018
Pribuss Engineering	1	25%	5	3%	3	75%	156	97%	4	161
Redwood City Electric	2	18%	280	20%	9	82%	1,120	80%	11	1,400
Rosendin Electric	4	24%	427	28%	13	76%	1,075	72%	17	1,502
Schuff Steel	23	23%	2,647	20%	78	77%	10,811	80%	101	13,458
Sheedy	1	50%	19	13%	1	50%	131	87%	2	150
Southland Ind.	3	7%	393	12%	38	93%	2,795	88%	41	3,188
Talus Construction	0	0%	0	0%	8	100%	611	100%	8	611
Totals To Date	87	17%	9,087	19%	434	83%	38,724	81%	521	47,811

4. Opportunities for Smaller, Local Subcontractors – Bid packages

- **Creating new opportunities:**

- *Six (6) large bid packages were broken into 20 components and re-advertised:*

- Lab Freezers: 2 bid packages Procurement Stage
 - *Hospital \$400k, OPB \$800k*
- Window Shades: 2 bid packages Procurement Stage
 - *Hospital \$400k, OPB \$150k*
- Interior Seismic Joints: 1 bid package Procurement Stage
 - *Hospital \$180k*
- Smoke Containment: 1 bid package Procurement Stage
 - *Hospital \$100k*
- Wheelchair Lift: 1 bid package Procurement Stage
 - *Hospital \$25k*

4. Opportunities for Other Local Subcontractors – Bid packages cont.

- **Postponed bid packages:**
 - Signage: 1 bid package
 - *Project \$3M*
 - Unistrut: 1 bid package
 - *Project \$300k*
 - Access Flooring: 1 bid package
 - *Hospital \$25k*
 - Radiation Shielding: 1 bid packages
 - *Hospital & OPB \$1.7M*
 - Projection Screen: 2 bid packages
 - *Hospital \$65k, OPB \$10k*
 - Bird Control: 1 bid packages
 - *Project \$75k*

4. Opportunities for Smaller, Local Subcontractors - Database

- **Outreach to smaller contractors**
 - *Business names provided at prior community meetings*
 - *Made many calls to companies – various sources, including the Human Rights Commission (HRC) database*
 - *All contractors on the list were called to verify their interest and the value of bid packages they could bid on*
 - *In addition to vetting the subcontractors list we also called each contractor from the list who showed interest to inform them of the prequalification meetings and bid dates*

4. Opportunities for Smaller, Local Subcontractors - Database

- **Outreach to smaller contractors – continued**
 - *45 Local companies were contacted that represented the packages broken into multiple bid packages for Masonry, Ceramic Tile, Flooring, Painting, Window Shades, Misc. Metals*
 - *11 of the 45 companies responded and attended the mandatory pre-bid meetings*
 - *8 of the 11 companies submitted pre-qualification packages*
 - *6 of the 8 companies are prequalified for Tiling, Painting and Casework, Miscellaneous Metals, Window Shades*
 - *The other 2 companies did not qualify*
 - *1 Local company was successful and was awarded work*

5. Other Community Engagement

- DPR hired an intern in addition to a front desk receptionist and labor foreman – the result of direct community referrals
- Interim resource added to assist in vetting the name-call list during this interim period
- Project has engaged FOUR construction administration interns from the South of Market Employment Center/Mission Hiring Hall Construction Administrative Training Program

5. Other Progress cont'd

- Peggy Johnson, Senior Project Accountant on Mission Bay Hospitals Project, appointed to work on outreach to local businesses for goods and services. peggy.johnson@ucsfmedctr.org
- The finalist groups for the Community Construction Outreach Project Manager have been notified and final selection is in process.

6. Next report: December 8, 2011