

UCSF Medical Center at Mission Bay

Local Workforce Meeting

March 10, 2011

Cindy Lima

Executive Director

Mission Bay Hospitals Project

Outline

- 1. Welcome, Introductions and Recap** Cindy Lima, UCSF
- 2. Trade Name Call Opportunities** Marinus Lamprecht, CCM
- 3. Progress to Date – Certified Payroll** Terry Rawlins, UCSF
- 4. Opportunities for Smaller, Local Subcontractors** Stuart Eckblad, UCSF
George Pfeffer, DPR
- 5. Other Community Engagement** Cindy Lima
- 6. Other Agenda Items**
- 7. Questions / Discussions**
- 8. Next Meeting**

1. Recap

- **UCSF is firmly committed to creating jobs and opportunities for hiring SF residents to help build the Mission Bay Hospital project**
 - *UCSF will work with DPR Construction to ensure that qualified SF residents have access to jobs*
 - *UCSF will voluntarily work toward a goal of reaching 20% SF residents of the project total workforce in year one, followed by a 5% increase per year through completion. These goals if reached, would more than double UCSF's historical average.*
- **Monthly community workforce meetings**
 - *Open to all*
 - *2nd Thursday of each month, 2-4 pm – future locations TBD – watch website*

1. Recap (continued)

- **Prior meetings:**

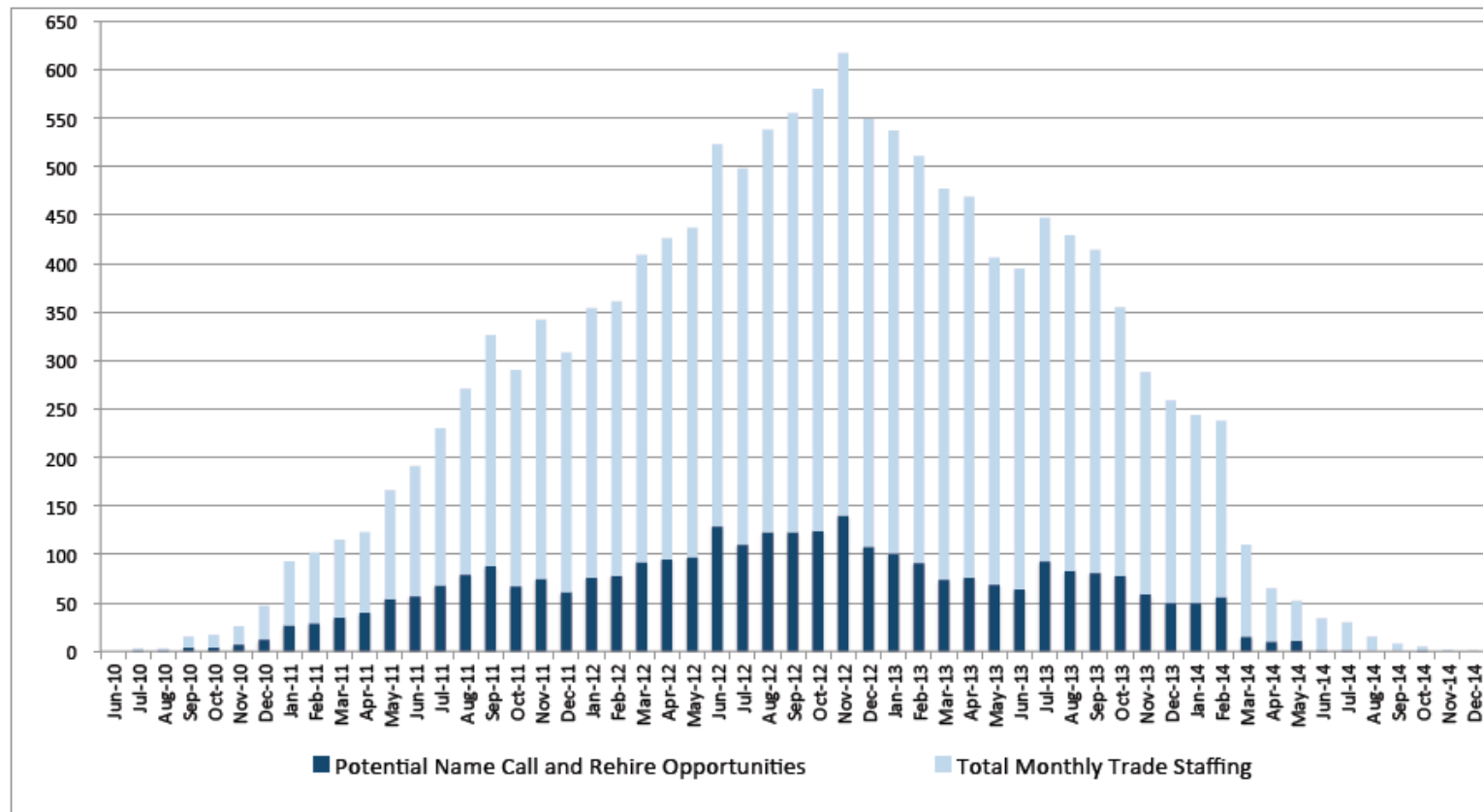
- *UCSF working on implementation of newly organized workforce program*
- *In the interim, names can be submitted to “Construction Jobs” on form: “Submission of Ready, Able and Qualified Local Craftsperson”*
 - Available at: www.missionbayhospitals.ucsf.edu or in the ICDC
- *UCSF to prepare trade-by-trade name call opportunities, by month (subject to union dispatch procedures)*
- *UCSF will report on actual local hiring progress*

2.1 Overall Project Trade Name Call Opportunities

UCSF Medical Center at Mission Bay Monthly Project Labor and Potential Name Call and Rehire Opportunities

UCSF Medical Center
at Mission Bay

March 10, 2011



2.2 Trade Name Call Opportunities

UCSF Medical Center at Mission Bay

2011 Potential Name Call Opportunities based on current Union Rules

March 10, 2011

TRADE	Mar-11	Apr-11	May-11	Jun-11	Jul-11	Aug-11	Sep-11	Oct-11	Nov-11	Dec-11	Jan-12	Feb-12
Sheet Metal	0	1	2	0	1	2	4	0	0	0	4	2
Plumbers	0	0	1	0	2	3	4	0	1	0	5	2
Ironworkers	1	2	10	7	9	2	0	0	4	0	0	0
Carpenters	5	3	1	0	0	0	2	0	7	1	7	3
Operators	0	0	0	0	0	1	0	0	0	0	0	0
Electrical	0	0	0	0	0	0	0	0	0	0	0	0
Glaziers	0	0	0	0	0	2	0	0	0	0	2	0
Masons	0	0	0	0	0	0	0	0	0	0	0	0
Laborers	2	0	0	0	0	1	0	0	0	0	0	0
Insulators/Fireproofers	0	0	0	0	0	2	1	0	0	1	0	0

3. Progress to Date – Certified Payroll

1. **Construction to date:** December 2010 through February 2011
 - *Local Headcount was 18%*
 - *Local Work Hours was 25%*
2. **Construction month:** February 2011 only
 - *Local Headcount was 23%*
 - *Local Work Hours was 23%*

3.1 Progress to Date – Construction Work (starting December 2010)

UCSF / Medical Center Mission Bay Community Construction Workforce Program Workforce Analysis Project To Date (December - February 2011)



Contractor	SF Workers	Head Count %	SF Apprentice	SF Hours	Work Hrs %	Non-SF Workers	Head Count %	Non-SF Apprentice	Non-SF Work Hours	Work Hrs %	Total Workforce	Total Work Hours
Acco	0	0.00%	0	0	0.00%	7	100.00%	1	438		7	438
Berkel And Company	10	31.25%	0	1983	23.91%	22	68.75%	1	6311	76.09%	32	8294
Broadway Mechanical	6	37.50%	3	1181	41.66%	10	62.50%	2	1654	58.34%	16	2835
Contra Costa Electric	0	0.00%	0	0	0.00%	2	100.00%	0	12	100.00%	2	12
Conco Cement Co.	0	0.00%	0	0	0.00%	6	100.00%	0	58	100.00%	6	58
Conco Pumping	0	0.00%	0	0	0.00%	2	100.00%	0	26	100.00%	2	26
DPR	12	24.00%	3	1597	27.39%	38	76.00%	2	4233	72.61%	50	5830
F Rogers	0	0.00%	0	0	0.00%	3	100.00%	1	32	100.00%	3	32
Griffin Soil	0	0.00%	0	0	0.00%	5	100.00%	0	49	100.00%	5	49
O. C. Jones	0	0.00%	0	0	0.00%	28	100.00%	0	754	100.00%	28	754
Pacific Coast	2	12.50%	0	16	2.89%	14	87.50%	5	537	97.11%	16	553
Redwood City Electric	3	25.00%	1	866	33.81%	9	75.00%	0	1695	66.19%	12	2561
Rosendin Electric	3	25.00%	1	260	13.37%	9	75.00%	0	1685	86.63%	12	1945
Talus Construction	0	0.00%	0	0	0.00%	4	100.00%	0	84	100.00%	4	84
Totals To Date	36	18.46%	8	5903	25.15%	159	81.54%	12	17568	74.85%	195	23471

3.2 Progress to Date – Construction Work (Month of February 2011 only)

Table Below Is For This Project Date: February, 2011

Contractor	SF Workers	Head Count %	SF Apprentice	SF Hours	Work Hrs %	Non-SF Workers	Head Count %	Non-SF Apprentice	Non-SF Work Hours	Work Hrs %	Total Workforce	Total Work Hours
Acco	0	0.00%	0	0	0.00%	5	100.00%	1	215	100.00%	5	215
Berkel And Company	4	23.53%	0	282	21.81%	13	76.47%	1	1011	78.19%	17	1293
Broadway Mechanical	3	27.27%	1	352	34.58%	8	72.73%	1	666	65.42%	11	1018
Conco Pumping	0	0.00%	0	0	0.00%	1	100.00%	0	11	100.00%	1	11
DPR	10	25.64%	2	635	22.03%	29	74.36%	2	2247	77.97%	39	2882
Pacific Coast Steel	2	18.18%	0	16	4.44%	9	81.82%	3	344	95.56%	11	360
Redwood City Electric	3	30.00%	1	243	30.04%	7	70.00%	0	566	69.96%	10	809
Rosendin Electric	1	12.50%	1	105	16.41%	7	87.50%	0	535	83.59%	8	640
Totals To Date	23	22.55%	5	1633	22.58%	79	77.45%	8	5595	77.41%	102	7228

Source: UCSF Office OF Affirmative Action, Equal Opportunity And Diversity

4. Opportunities for Smaller, Local Subcontractors – Bid packages

- **Creating new opportunities:**
 - *Six (6) large bid packages are being broken into 17 components and re-advertised:*

Planned

Advertisement dates

- | | | |
|------------------|----------------|------------|
| • Masonry: | 2 bid packages | March 2011 |
| • Misc Metals: | 3 bid packages | March 2011 |
| • Ceramic Tile: | 2 bid packages | April 2011 |
| • Flooring: | 5 bid packages | April 2011 |
| • Painting: | 3 bid packages | May 2011 |
| • Window Shades: | 2 bid packages | May 2011 |

4. Opportunities for Smaller, Local Subcontractors - Database

- **Outreach to create contractor database**
 - *Business names provided at prior community meetings*
 - *Made many calls to companies – various sources, including the Human Rights Commission (HRC) database*
 - *Please let us know of businesses we should include in our database*

4. Opportunities for Smaller, Local Subcontractors – Process

- **Process**

- *All interested bidders must attend a mandatory pre-bid meeting and must be prequalified in order to submit a bid*
- *Advertisements will list mandatory pre-bid meeting dates; posted on Mondays and Thursdays in the **Daily Pacific Builder** and the **Small Business Exchange***
- *Advertisements will be running starting the week of March 21st and will run through mid May*

5. Other Community Engagement

- DPR hired a front desk receptionist and labor foreman – the result of direct community referrals
- Interim resource added to assist in vetting the name-call list during this interim period
- Project has engaged a construction administration intern from the South of Market Employment Center/Mission Hiring Hall Construction Administrative Training Program
- Peggy Johnson, Senior Project Accountant on Mission Bay Hospitals Project, appointed to work on outreach to local businesses for goods and services. peggy.johnson@ucsfmedctr.org

5. Other Progress cont'd

- UCSF working on Request for Qualifications (RFQ) for a Community Construction Outreach Project Manager – targeting full implementation by June
- UCSF Medical Center at Mission Bay project team planning to launch a program for project staff to volunteer in the local community

6. Other Agenda Items

7. Questions/Discussion

8. Next meeting:

April 14, 2011

2 – 4 pm

**Mission Bay Genentech Hall
Room N-114, first floor**