

UCSF Medical Center at Mission Bay

Local Workforce Meeting

June 9, 2011

Cindy Lima

Executive Director

Mission Bay Hospitals Project

Outline

- 1. Welcome, Introductions and Recap** Marinus Lamprecht, CCM
- 2. Trade Name Call Opportunities** Marinus Lamprecht, CCM
- 3. Progress to Date – Certified Payroll** Terry Rawlins, UCSF
- 4. Opportunities for Smaller, Local Subcontractors** Marinus Lamprecht, CCM
- 5. Other Community Engagement** Marinus Lamprecht, CCM
- 6. Other Agenda Items**
- 7. Questions / Discussions**
- 8. Next Meeting**

1. Recap

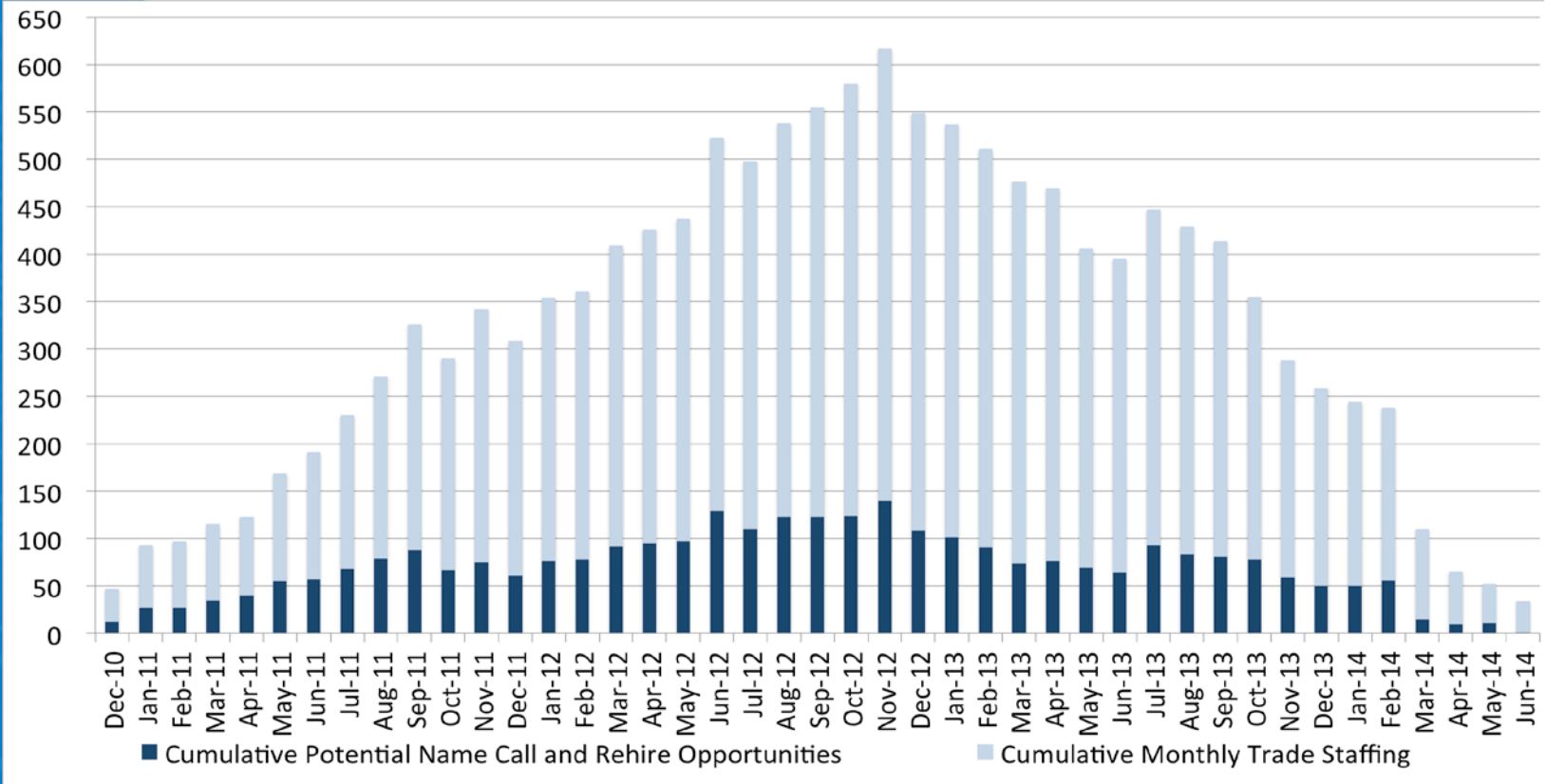
- **UCSF is firmly committed to creating jobs and opportunities for hiring SF residents to help build the Mission Bay Hospital project**
 - *UCSF will work with DPR Construction to ensure that qualified SF residents have access to jobs*
 - *UCSF will voluntarily work toward a goal of reaching 20% SF residents of the project total workforce in year one, followed by a 5% increase per year through completion. These goals if reached, would more than double UCSF's historical average.*
- **Monthly community workforce meetings**
 - *Open to all*
 - *2nd Thursday of each month, 2-4 pm – future locations TBD – watch website*

1. Recap (continued)

- **Prior meetings:**

- *UCSF working on implementation of newly organized workforce program*
- *In the interim, names can be submitted to “Construction Jobs” on form: “Submission of Ready, Able and Qualified Local Craftsperson”*
 - Available at: www.missionbayhospitals.ucsf.edu or in the ICDC
- *UCSF to prepare trade-by-trade name call opportunities, by month (subject to union dispatch procedures)*
- *UCSF will report on actual local hiring progress*

2.1 Overall Project Trade Name Call Opportunities



2.2 Trade Name Call Opportunities

UCSF Medical Center at Mission Bay Projected Potential Monthly Local Labor Name Call and Rehire Opportunities

UCSF Medical Center
at Mission Bay

June 9, 2011

TRADE	Jun-11	Jul-11	Aug-11	Sep-11	Oct-11	Nov-11	Dec-11	Jan-12	Feb-12	Mar-12	Apr-12	May-12
Sheet Metal	0	0	1	1	1	0	2	10	1	2	3	0
Plumbers	0	2	3	4	0	1	0	5	2	1	2	0
Ironworkers	7	10	1	0	0	4	0	0	0	1	0	0
Carpenters	2	0	0	2	0	7	1	7	3	9	0	3
Operators	0	0	1	0	0	0	0	0	0	0	0	0
Electrical	0	0	0	0	0	0	0	0	0	0	0	0
Glaziers	0	0	2	0	0	0	0	2	0	1	1	0
Masons	0	0	0	0	0	0	0	0	0	0	1	0
Painters	0	0	0	0	0	0	0	0	0	0	0	0
Laborers	0	0	1	0	0	0	0	0	0	0	0	1
Insulators/Fireproofers	0	0	2	1	0	0	1	0	0	1	0	0
Flooring	0	0	0	0	0	0	0	0	0	0	0	0
Heliport	0	0	0	0	0	0	0	0	0	0	0	0
Other	0	0	1	0	0	0	0	0	0	0	0	0
Elevator	0	0	0	0	0	0	1	0	0	0	1	0

3. Progress to Date – Certified Payroll

1. Construction to date: December 2010 through April 2011

- *Local Head count was 15%*
- *Local Work Hours was 21%*

2. Construction month: Final April 2011 only

- *Local Head count was 14%*
- *Local Work Hours was 16%*

3.1 Progress to Date – Construction Work (starting December 2010)

UCSF / Medical Center Mission Bay
Community Construction Workforce Program Workforce Analysis
Project reporting date: December 1 - April 30, 2011

Contractor	SF Workers	Head Count %	SF Apprentice	SF Hours	Work Hrs %	Non-SF Workers	Head Count %	Non-SF Apprentice	Non-SF Work Hours	Work Hrs %	Total Workforce	Total Work Hours
Acco	0	0.00%	0	0	0.00%	7	100.00%	1	1041	100.00%	7	1041
Berkel And Company	10	31.25%	0	2569	22.85%	22	68.75%	1	8772	77.35%	32	11341
Broadway Mechanical	6	30.00%	3	1870	37.75%	14	70.00%	2	3084	62.25%	20	4954
Contra Costa Electric	0	0.00%	0	0	0.00%	2	100.00%	0	12	100.00%	2	12
Conco Cement Co.	0	0.00%	0	0	0.00%	6	100.00%	0	58	100.00%	6	58
Conco Pumping	0	0.00%	0	0	0.00%	5	100.00%	0	55	100.00%	5	55
Dees-Hennessey	1	5.28%	0	8	0.57%	18	94.74%	0	1398	99.43%	19	1404
Doyle's	0	0.00%	0	0	0.00%	17	100.00%	2	2338	100.00%	17	2338
DPR	19	20.43%	4	4492	24.11%	74	79.57%	3	14141	75.89%	93	18633
F Rogers	0	0.00%	0	0	0.00%	5	100.00%	1	133	100.00%	5	133
F3 & Associates	0	0.00%	0	0	0.00%	2	100.00%	0	12	100.00%	2	12
Griffin Soil	0	0.00%	0	0	0.00%	5	100.00%	0	49	100.00%	5	49
O. C. Jones	0	0.00%	0	0	0.00%	33	100.00%	0	899	100.00%	33	899
Pacific Coast	9	11.89%	5	564	7.80%	68	88.31%	19	6664	92.20%	77	7228
Redwood City Electric	4	30.77%	2	1991	35.38%	9	69.23%	0	3636	64.82%	13	5627
Rosendin Electric	3	23.08%	0	558	13.29%	10	76.92%	0	3641	86.71%	13	4199
Sheedy	2	20.00%	0	38	12.84%	8	80.00%	0	258	87.16%	10	296
Talus Construction	0	0.00%	0	0	0.00%	4	100.00%	0	84	100.00%	4	84
TRM Corp	0	0.00%	0	0	0.00%	6	100.00%	1	103	100.00%	6	103
Totals To Date	54	14.63%	14	12090	20.68%	315	85.37%	30	46376	79.32%	369	58466

3.2 Progress to Date – Construction Work (Month of April 2011 only)

Table Below Is For This Project Date: April 1 -30, 2011

Contractor	SF Workers	Head Count %	SF Apprentice	SF Hours	Work Hrs %	Non-SF Workers	Head Count %	Non-SF Apprentice	Non-SF Work Hours	Work Hrs %	Total Workforce	Total Work Hours
Acco	0	0.00%	0	0	0.00%	3	100.00%	0	271	100.00%	3	271
Berkel & Company	1	25.00%	0	8	1.57%	3	75.00%	0	500	98.43%	4	508
Broadway Mechanical	3	23.08%	1	308	28.89%	10	76.92%	0	833	73.01%	13	1141
Conco Pumping	0	0.00%	0	0	0.00%	1	100.00%	0	7	100.00%	1	7
Dees-Hennessey	0	0.00%	0	0	0.00%	16	100.00%	0	615	100.00%	16	615
Doyle's	0	0.00%	0	0	0.00%	13	100.00%	1	838	100.00%	13	838
DPR	15	20.00%	2	1722	22.15%	60	80.00%	3	6052	77.85%	75	7774
F. Roger's	0	0.00%	0	0	0.00%	3	100.00%	0	37	100.00%	3	37
F3 & Associates	0	0.00%	0	0	0.00%	2	100.00%	0	12	100.00%	2	12
O.C. Jones	0	0.00%	0	0	0.00%	8	100.00%	0	145	100.00%	8	145
Pacific Coast Steel	7	10.81%	4	264	6.11%	59	89.39%	16	4060	93.89%	66	4324
Redwood City	4	40.00%	2	468	37.86%	6	60.00%	0	768	62.14%	10	1236
Rosendin Electric	1	10.00%	0	143	13.43%	9	90.00%	0	922	88.57%	10	1065
Sheedy	1	12.50%	0	33	11.54%	7	87.50%	0	253	88.46%	8	286
Totals To Date	32	14.29%	9	2946	16.39%	200	89.29%	20	15313	85.20%	224	17973

4. Opportunities for Smaller, Local Subcontractors – Bid packages

- **Creating new opportunities:**

- *Six (6) large bid packages were broken into 20 components and re-advertised:*

- **Masonry:** 2 bid packages Bid Out
 - *Architectural Stone \$715k, Site \$590k*
- **Ceramic Tile:** 2 bid packages Procurement Stage
 - *Hospital \$2M, Out Patient Building \$500k*
- **Flooring:** 5 bid packages Procurement Stage
 - *Hospital Carpet \$530k, OPB Carpet \$390k, Hospital Sheet Vinyl \$5M, OPB Sheet Vinyl \$800k, Energy Center Flooring \$150k*
- **Painting:** 5 bid packages Procurement Stage
 - *Hospital Paint \$2.8M, OPB Paint \$840k, Energy Center Paint \$220k, Hospital Wall Coverings \$290k, OPB Wall Coverings \$196k*
- **Window Shades:** 2 bid packages Procurement Stage
 - *Hospital \$400k, OPB \$150k*
- **Misc. Metals:** 4 bid packages Procurement Stage
 - *Hospital \$2.5M, OPB \$820k, Energy Center \$135k, Site \$520k*

4. Opportunities for Smaller, Local Subcontractors – Bid packages cont.

- **Additional smaller bid packages:**

- Lockers: 1 bid package Procurement Stage
 - Hospital \$260k
- Display Systems: 1 bid package Procurement Stage
 - Hospital \$180k
- Wheelchair Lift: 1 bid package Procurement Stage
 - Hospital \$25k
- Toilet Accessories: 2 bid packages Procurement Stage
 - Hospital \$850k, OPB \$160k
- Projection Screen: 2 bid packages Procurement Stage
 - Hospital \$65k, OPB \$10k

4. Opportunities for Smaller, Local Subcontractors – Database

- **Outreach to smaller contractors**
 - *Business names provided at prior community meetings*
 - *Made many calls to companies – various sources, including the Human Rights Commission (HRC) database*
 - *All contractors on the list were called to verify their interest and the value of bid packages they could bid on*
 - *In addition to vetting the subcontractors list we also called each contractor from the list who showed interest to inform them of the prequalification meetings and bid dates*

4. Opportunities for Smaller, Local Subcontractors – Database

- **Outreach to smaller contractors – continued**
 - *45 Local companies were contacted that represented the packages broken into multiple bid packages for Masonry, Ceramic Tile, Flooring, Painting, Window Shades, Misc. Metals*
 - *11 of the 45 companies responded and attended the mandatory pre-bid meetings*
 - *8 of the 11 companies submitted prequalification packages*
 - *4 of the 8 companies are prequalified for Tiling, Painting and Casework*
 - *The other 4 are still under review by DPR for Miscellaneous Metals, Window Shades and Interior Glazing*

5. Other Community Engagement

- DPR hired an intern in addition to a front desk receptionist and labor foreman – the result of direct community referrals
- Interim resource added to assist in vetting the name-call list during this interim period
- Project has engaged THREE construction administration interns from the South of Market Employment Center/Mission Hiring Hall Construction Administrative Training Program
- UCSF and DPR are providing assistance with industry exposure as part of job-readiness training

5. Other Progress cont'd

- Peggy Johnson, Senior Project Accountant on Mission Bay Hospitals Project, appointed to work on outreach to local businesses for goods and services. peggy.johnson@ucsfmedctr.org
- The RFP for a Community Construction Outreach Project Manager has been issued by UCSF's Community Relations Department. It relates to construction workforce development for all UCSF projects, including the Mission Bay Hospitals Project.
- There are five groups that submitted for the CCOPM RFP and are being invited back to UCSF to make presentations.

6. Other Agenda Items

7. Questions/Discussion

8. Next meeting:

July 14, 2011

2 – 4 pm

**Mission Bay Genentech Hall
Room N-114, first floor**