

UCSF Medical Center at Mission Bay

Local Workforce Report

December 8, 2011

Cindy Lima

Executive Director

Mission Bay Hospitals Project

Outline

1. Recap
2. Trade Name Call Opportunities
3. Progress to Date – Certified Payroll
4. Opportunities for Smaller Local Subcontractors
5. Other Community Engagement
6. Next Report

1. Recap

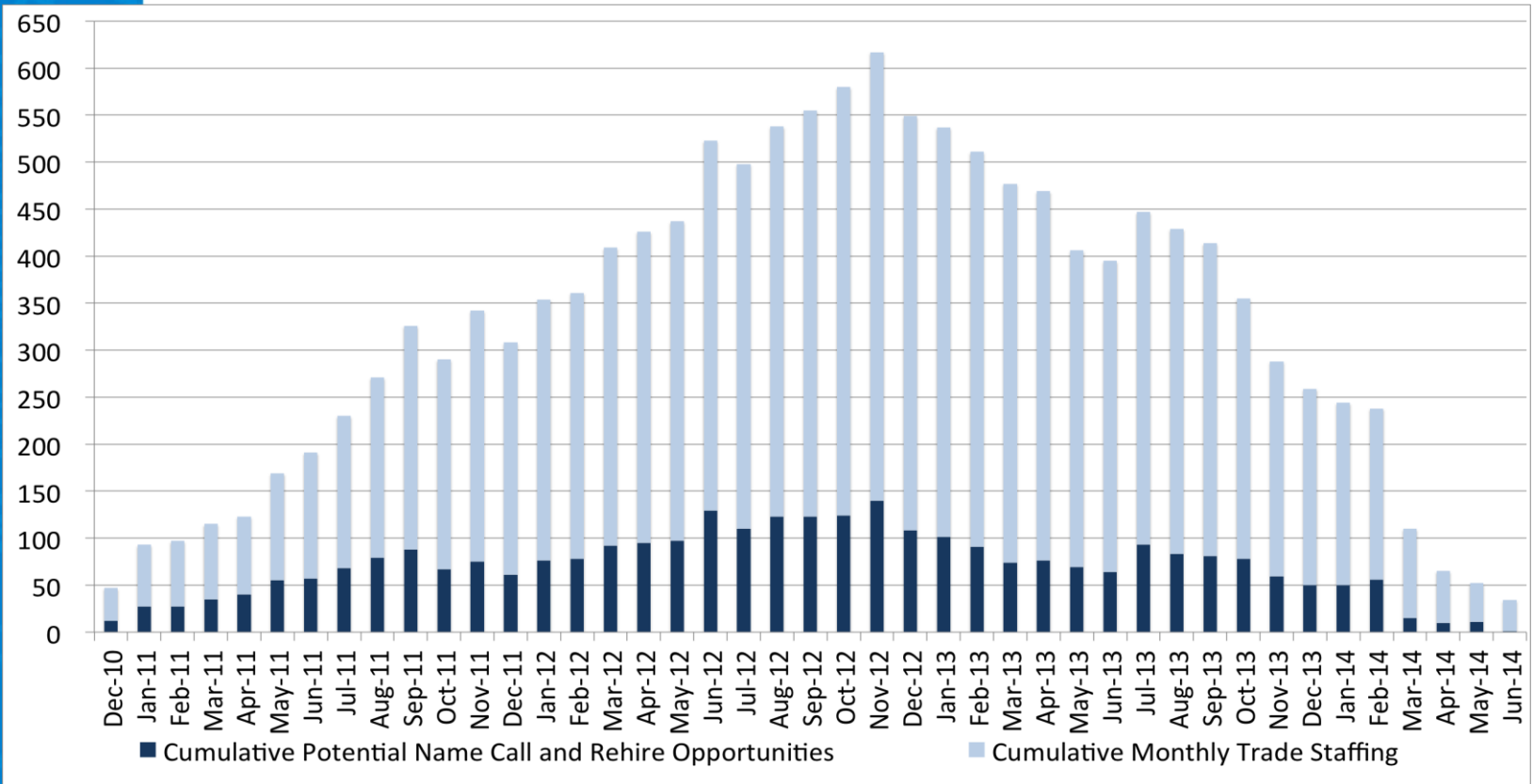
- **UCSF is firmly committed to creating jobs and opportunities for hiring SF residents to help build the Mission Bay Hospitals Project**
 - *UCSF will work with DPR Construction to ensure that qualified SF residents have access to jobs.*
 - *UCSF will voluntarily work toward a goal of reaching 20% SF residents of the project total workforce in year one, followed by a 5% increase per year through completion. These goals if reached, would more than double UCSF's historical average.*

1. Recap (continued)

- **Prior meetings:**

- *UCSF working on implementation of newly organized workforce program*
- *In the interim, names can be submitted to “Construction Jobs” on form: “Submission of Ready, Able and Qualified Local Craftsperson”*
 - Available at: www.missionbayhospitals.ucsf.edu or in the ICDC
- *UCSF to prepare trade-by-trade name call opportunities, by month (subject to union dispatch procedures)*
- *UCSF will report on actual local hiring progress*

2.1 Overall Project Trade Name Call Opportunities



2.2 Trade Name Call Opportunities

UCSF Medical Center at Mission Bay Projected Potential Monthly Local Labor Name Call and Rehire Opportunities

December 8, 2011

UCSF Medical Center
at Mission Bay

TRADE	Dec-11	Jan-12	Feb-12	Mar-12	Apr-12	May-12	Jun-12	Jul-12	Aug-12	Sep-12	Oct-12	Nov-12
Sheet Metal	2	10	1	2	3	0	23	0	10	0	0	25
Plumbers	0	5	2	1	2	0	5	0	1	4	0	0
Ironworkers	0	0	0	1	0	0	2	0	0	0	0	0
Carpenters	1	7	3	9	0	3	0	0	1	4	1	0
Operators	0	0	0	0	0	0	0	1	1	1	0	0
Electrical	0	0	0	0	0	0	0	0	0	0	0	0
Glaziers	0	2	0	1	1	0	0	0	0	0	0	0
Masons	0	0	0	0	1	0	0	0	0	0	0	0
Painters	0	0	0	0	0	0	1	0	1	1	0	0
Laborers	0	0	0	0	0	1	1	2	1	0	0	0
Insulators/Fireproofers	1	0	0	1	0	0	0	0	0	1	0	0
Flooring	0	0	0	0	0	0	0	0	0	0	2	0
Heliport	0	0	0	0	0	0	0	0	0	0	0	0
Other	0	0	0	0	0	0	0	1	1	1	0	0
Elevator	1	0	0	0	1	0	0	0	0	0	0	0

3. Progress to Date – Certified Payroll

1. Construction to date: December 2010 through October 2011

- *Local Headcount was 16%*
- *Local Work Hours was 21%*

2. Construction month: Final October 2011 only

- *Local Headcount was 16%*
- *Local Work Hours was 19%*

3.1 Progress to Date – Construction Work (starting December 2010)

UCSF / Medical Center Mission Bay
 Community Construction Workforce Program Workforce Analysis
 Project reporting date: December 1, 2010 - October 31, 2011

Contractor	San Francisco Workers				Non-San Francisco Workers				Total Workforce	Total Work Hours
	SF Workers	Head Count %	SF Hours	Work Hrs %	Non-SF Workers	Head Count %	Non-SF Work Hours	Work Hrs %		
Acco	6	20%	1,976	23%	24	80%	6,180	77%	30	8,155
Anning Johnson	6	26%	634	35%	17	74%	1,171	65%	23	1,805
Berkel and Company	10	29%	2,570	20%	24	71%	9,975	80%	34	12,544
Broadway Mechanical	9	18%	4,642	25%	40	82%	13,839	75%	49	18,481
B.T. Mancini	3	16%	540	16%	16	84%	2,844	84%	19	3,384
CMC Rebar	0	0%	0	0%	49	100%	3,305	100%	49	3,305
Conco Pumping	0	0%	0	0%	18	100%	683	100%	18	683
Dees-Hennessey	4	13%	82	5%	27	87%	1,634	95%	31	1,716
Doyles	1	5%	235	5%	20	95%	4,527	95%	21	4,762
DPR	40	18%	14,391	22%	178	82%	52,181	78%	218	66,572
F Rogers	0	0%	0	0%	9	100%	89	100%	9	89
F3 & Associates	0	0%	0	0%	10	100%	987	100%	10	987
Floor Seal Technology	0	0%	0	0%	9	100%	139	100%	9	139
Jos. J. Albanese	3	6%	704	20%	51	94%	2,766	80%	54	3,469
O. C. Jones	0	0%	0	0%	62	100%	1,726	100%	62	1,726
Pacific Coast Steel	29	22%	6,494	25%	105	78%	18,997	75%	134	25,490
Pacific Erectors	3	11%	1,104	12%	25	89%	7,865	88%	28	8,969
Pribuss Engineering	1	20%	11	3%	4	80%	327	97%	5	338
Redwood City Electric	7	26%	2,960	29%	20	74%	7,422	71%	27	10,382
Rosendin Electric	10	27%	2,443	22%	27	73%	8,682	78%	37	11,125
Schuff Steel	28	23%	13,900	23%	93	77%	47,028	77%	121	60,928
Sheedy	5	38%	167	12%	8	62%	1,262	88%	13	1,429
Southland Ind.	4	6%	879	8%	59	94%	10,743	92%	63	11,622
Talus Construction	1	8%	52	2%	11	92%	2,300	98%	12	2,352
Totals To Date	170	16%	53,781	21%	906	84%	206,668	79%	1076	260,450

3.2 Progress to Date – Construction Work (Month of October 2011 only)

Table Below Is For This Project Date: October 1 - 31, 2011

Contractor	San Francisco Workers				Non-San Francisco Workers				Total Workforce	Total Work Hours
	SF Workers	Head Count %	SF Hours	Work Hrs %	Non-SF Workers	Head Count %	Non-SF Work Hours	Work Hrs %		
Acco	7	33%	483	27%	14	67%	1,308	73%	21	1,791
Anning Johnson	3	23%	357	35%	10	77%	675	65%	13	1,032
Berkel and Company	0	0%	0	0%	0	0%	0	0%	0	0
Broadway Mechanical	6	22%	822	23%	21	78%	2,813	77%	27	3,635
B.T. Mancini	1	8%	108	10%	11	92%	1,007	90%	12	1,115
CMC Rebar	0	0%	0	0%	12	100%	530	100%	12	724
Conco Pumping	0	0%	0	0%	7	100%	134	100%	7	134
Dees-Hennessey	0	0%	0	0%	0	0%	0	0%	0	0
Doyles	1	8%	43	12%	11	92%	315	88%	12	358
DPR	16	16%	2,284	17%	86	84%	11,316	83%	102	13,600
F Rogers	0	0%	0	0%	1	100%	4	100%	1	4
F3 & Associates	0	0%	0	0%	2	100%	136	100%	2	136
Floor Seal Technology	0	0%	0	0%	6	100%	61	100%	6	61
Jos. J. Albanese	2	9%	253	18%	20	91%	1,119	82%	22	1,372
O. C. Jones	0	0%	0	0%	2	100%	17	100%	2	17
Pacific Coast Steel	12	27%	1,092	32%	32	73%	2,355	68%	44	3,447
Pacific Erectors	3	21%	314	17%	11	79%	1,585	83%	14	1,899
Pribuss Engineering	1	25%	6	4%	3	75%	129	96%	4	135
Redwood City Electric	2	18%	309	20%	9	82%	1,234	80%	11	1,543
Rosendin Electric	4	21%	541	30%	15	79%	1,276	70%	19	1,817
Schuff Steel	14	18%	2,483	19%	65	82%	10,739	81%	79	13,222
Sheedy	1	25%	8	3%	3	75%	250	97%	4	258
Southland Ind.	4	8%	458	11%	49	92%	3,764	89%	53	4,222
Talus Construction	0	0%	0	0%	8	100%	675	100%	8	675
Totals To Date	77	16%	9,561	19%	398	84%	41,439	81%	475	51,194

4. Opportunities for Smaller, Local Subcontractors – Bid packages

- **Creating new opportunities:**

- *Six (6) large bid packages were broken into 20 components and re-advertised:*

- Lab Freezers: 2 bid packages Bid Out
 - *Hospital \$400k, OPB \$800k*
 - Window Shades: 2 bid packages Bid Out
 - *Hospital \$400k, OPB \$150k*
 - Interior Seismic Joints: 1 bid package Procurement Stage
 - *Hospital \$180k*
 - Smoke Containment: 1 bid package Procurement Stage
 - *Hospital \$100k*
 - Wheelchair Lift: 1 bid package Procurement Stage
 - *Hospital \$25k*

4. Opportunities for Other Local Subcontractors – Bid packages cont.

- **Postponed bid packages:**
 - Signage: 1 bid package
 - *Project \$3M*
 - Unistrut: 1 bid package
 - *Project \$300k*
 - Access Flooring: 1 bid package
 - *Hospital \$25k*
 - Radiation Shielding: 1 bid packages
 - *Hospital & OPB \$1.7M*
 - Projection Screen: 2 bid packages
 - *Hospital \$65k, OPB \$10k*
 - Bird Control: 1 bid packages
 - *Project \$75k*

4. Opportunities for Smaller, Local Subcontractors - Database

- **Outreach to smaller contractors**
 - *Business names provided at prior community meetings*
 - *Made many calls to companies – various sources, including the Human Rights Commission (HRC) database*
 - *All contractors on the list were called to verify their interest and the value of bid packages they could bid on*
 - *In addition to vetting the subcontractors list we also called each contractor from the list who showed interest to inform them of the prequalification meetings and bid dates*

4. Opportunities for Smaller, Local Subcontractors - Database

- **Outreach to smaller contractors – continued**
 - *45 Local companies were contacted that represented the packages broken into multiple bid packages for Masonry, Ceramic Tile, Flooring, Painting, Window Shades, Misc. Metals*
 - *11 of the 45 companies responded and attended the mandatory pre-bid meetings*
 - *8 of the 11 companies submitted pre-qualification packages*
 - *6 of the 8 companies are prequalified for Tiling, Painting and Casework, Miscellaneous Metals, Window Shades*
 - *The other 2 companies did not qualify*
 - *1 Local company was successful and was awarded work*

5. Other Community Engagement

- UCSF announced that Mission Hiring Hall (MHH) has been retained to help the University meet its voluntary local hiring goals. MHH will partner with UCSF on its local hiring initiative on building projects that have a total construction cost greater than \$5 million.
- DPR hired an intern in addition to a front desk receptionist and labor foreman – the result of direct community referrals.
- Interim resource added to assist in vetting the name-call list during this interim period.

5. Other Progress cont'd

- Project has engaged FOUR construction administration interns from the South of Market Employment Center/Mission Hiring Hall Construction Administrative Training Program.
- Peggy Johnson, Senior Project Accountant on Mission Bay Hospitals Project, appointed to work on outreach to local businesses for goods and services. peggy.johnson@ucsfmedctr.org

6. Next report: January 12, 2012