

UCSF Medical Center at Mission Bay

Local Workforce Meeting

May 12, 2011

Cindy Lima

Executive Director

Mission Bay Hospitals Project

Outline

- 1. Welcome, Introductions and Recap** Cindy Lima, UCSF
- 2. Trade Name Call Opportunities** Marinus Lamprecht, CCM
- 3. Progress to Date – Certified Payroll** Terry Rawlins, UCSF
- 4. Opportunities for Smaller, Local Subcontractors** Stuart Eckblad, UCSF
- 5. Other Community Engagement** Cindy Lima, UCSF
- 6. Other Agenda Items**
- 7. Questions / Discussions**
- 8. Next Meeting**

1. Recap

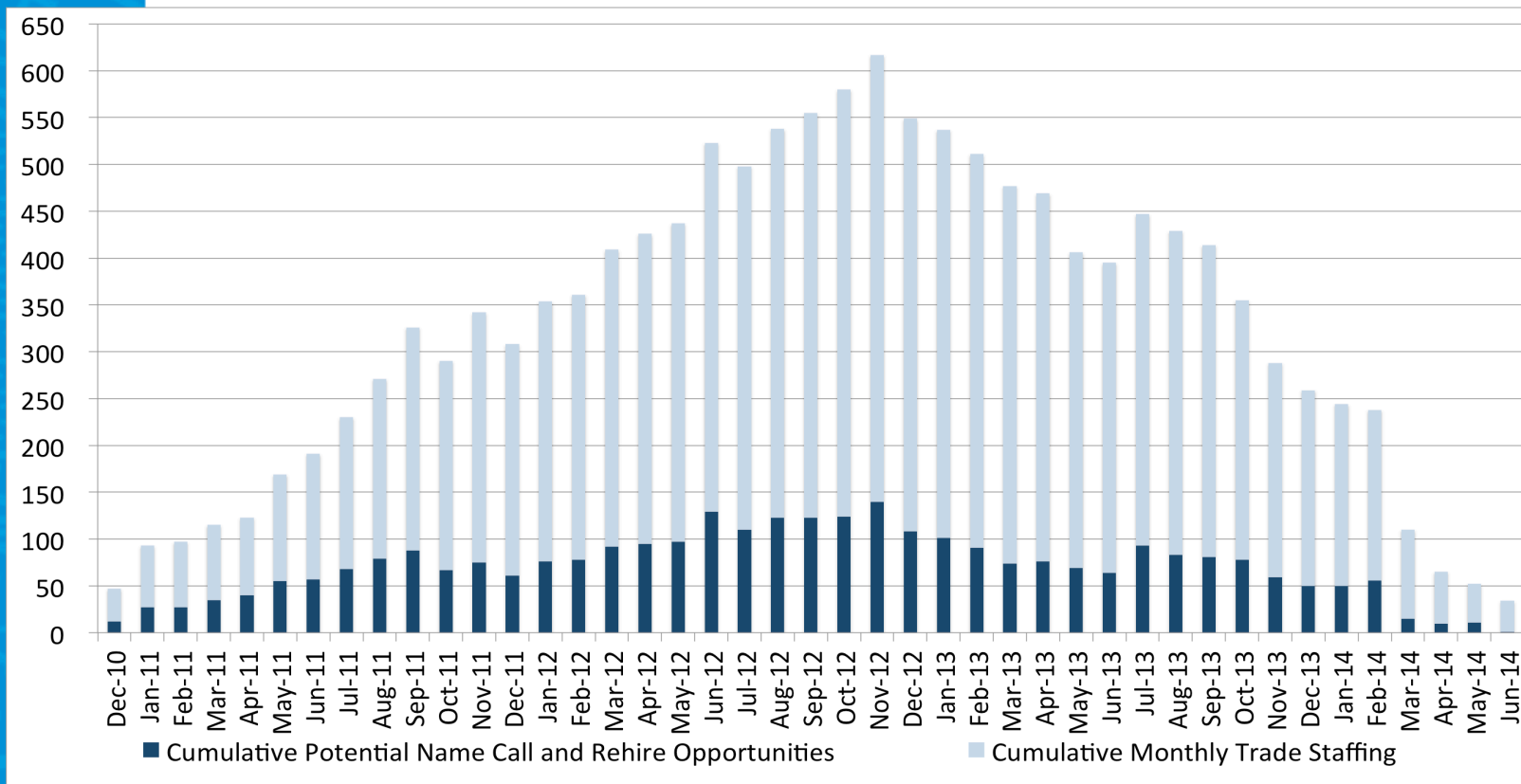
- **UCSF is firmly committed to creating jobs and opportunities for hiring SF residents to help build the Mission Bay Hospital project**
 - *UCSF will work with DPR Construction to ensure that qualified SF residents have access to jobs*
 - *UCSF will voluntarily work toward a goal of reaching 20% SF residents of the project total workforce in year one, followed by a 5% increase per year through completion. These goals if reached, would more than double UCSF's historical average.*
- **Monthly community workforce meetings**
 - *Open to all*
 - *2nd Thursday of each month, 2-4 pm – future locations TBD – watch website*

1. Recap (continued)

- **Prior meetings:**

- *UCSF working on implementation of newly organized workforce program*
- *In the interim, names can be submitted to “Construction Jobs” on form: “Submission of Ready, Able and Qualified Local Craftsperson”*
 - Available at: www.missionbayhospitals.ucsf.edu or in the ICDC
- *UCSF to prepare trade-by-trade name call opportunities, by month (subject to union dispatch procedures)*
- *UCSF will report on actual local hiring progress*

2.1 Overall Project Trade Name Call Opportunities



2.2 Trade Name Call Opportunities

UCSF Medical Center at Mission Bay Projected Potential Monthly Local Labor Name Call and Rehire Opportunities

April 14, 2011

UCSF Medical Center
at Mission Bay

TRADE	Apr-11	May-11	Jun-11	Jul-11	Aug-11	Sep-11	Oct-11	Nov-11	Dec-11	Jan-12	Feb-12	Mar-12
Sheet Metal	0	0	0	0	1	1	1	0	2	10	1	2
Plumbers	0	1	0	2	3	4	0	1	0	5	2	1
Ironworkers	2	10	7	10	1	0	0	4	0	0	0	1
Carpenters	1	2	2	0	0	2	0	7	1	7	3	9
Operators	0	0	0	0	1	0	0	0	0	0	0	0
Electrical	0	0	0	0	0	0	0	0	0	0	0	0
Glaziers	0	0	0	0	2	0	0	0	0	2	0	1
Masons	0	0	0	0	0	0	0	0	0	0	0	0
Painters	0	0	0	0	0	0	0	0	0	0	0	0
Laborers	0	0	0	0	1	0	0	0	0	0	0	0
Insulators/Fireproofers	0	0	0	0	2	1	0	0	1	0	0	1
Flooring	0	0	0	0	0	0	0	0	0	0	0	0
Heliport	0	0	0	0	0	0	0	0	0	0	0	0
Other	0	1	0	0	1	0	0	0	0	0	0	0
Elevator	0	0	0	0	0	0	0	0	1	0	0	0

3. Progress to Date – Certified Payroll

1. **Construction to date:** December 2010 through March 2011
 - Local Headcount was **18%**
 - Local Work Hours was **25%**
2. **Construction month:** Final March 2011 only
 - Local Headcount was **21%**
 - Local Work Hours was **24%**

3.1 Progress to Date – Construction Work (starting December 2010)

UCSF / Medical Center Mission Bay Community Construction Workforce Program Workforce Analysis Project To Date (December 1 - March 31, 2011)

Contractor	SF Workers	Head Count %	SF Apprentice	SF Hours	Work Hrs %	Non-SF Workers	Head Count %	Non-SF Apprentice	Non-SF Work Hours	Work Hrs %	Total Workforce	Total Work Hours
Acco	0	0.00%	0	0	0.00%	7	100.00%	1	438	100.00%	7	438
Berkel And Company	10	31.25%	0	2205	23.76%	22	68.75%	1	7077	76.24%	32	9282
Broadway Mechanical	6	35.29%	3	1562	40.97%	11	64.71%	2	2251	59.03%	17	3813
Contra Costa Electric	0	0.00%	0	0	0.00%	2	100.00%	0	12	100.00%	2	12
Conco Cement Co.	0	0.00%	0	0	0.00%	6	100.00%	0	58	100.00%	6	58
Conco Pumping	0	0.00%	0	0	0.00%	2	100.00%	0	26	100.00%	2	26
DPR	17	23.61%	3	2770	25.51%	55	76.39%	3	8090	74.49%	72	10860
F Rogers	0	0.00%	0	0	0.00%	3	100.00%	1	32	100.00%	3	32
Griffin Soil	0	0.00%	0	0	0.00%	5	100.00%	0	49	100.00%	5	49
O. C. Jones	0	0.00%	0	0	0.00%	28	100.00%	0	754	100.00%	28	754
Pacific Coast	2	8.70%	0	195	12.73%	21	91.30%	9	1337	87.27%	23	1532
Redwood City Electric	3	25.00%	1	949	33.77%	9	75.00%	0	1861	66.23%	12	2810
Rosendin Electric	3	23.08%	1	327	13.47%	10	76.92%	0	2101	86.53%	13	2428
Talus Construction	0	0.00%	0	0	0.00%	4	100.00%	0	84	100.00%	4	84
Totals To Date	41	18.14%	8	8008	24.89%	185	81.86%	17	24170	75.11%	226	32178

3.2 Progress to Date – Construction Work (Month of March 2011 only)

Table Below Is For This Project Date: March 1 -31, 2011

Contractor	SF Workers	Head Count %	SF Apprentice	SF Hours	Work Hrs %	Non-SF Workers	Head Count %	Non-SF Apprentice	Non-SF Work Hours	Work Hrs %	Total Workforce	Total Work Hours
Broadway Mechanical	3	37.50%	1	381	38.96%	5	62.50%	0	597	61.04%	8	978
DPR	13	22.03%	1	1173	23.32%	46	77.97%	3	3857	76.68%	59	5030
Pacific Coast Steel	2	13.33%	0	90	16.61%	13	86.67%	6	452	83.39%	15	542
Rosendin Electric	1	10.00%	1	67	13.87%	9	90.00%	0	416		10	483
Totals To Date	19	20.65%	3	1711	24.33%	73	79.35%	9	5322	75.67%	92	7033

4. Opportunities for Smaller, Local Subcontractors – Bid packages

- **Creating new opportunities:**

- *Six (6) large bid packages were broken into 20 components and re-advertised:*

- **Masonry:** 2 bid packages Bid Out
 - *Architectural Stone \$715k, Site \$590k*
- **Ceramic Tile:** 2 bid packages Prequalification Stage
 - *Hospital \$2M, Out Patient Building \$500k*
- **Flooring:** 5 bid packages Prequalification Stage
 - *Hospital Carpet \$530k, OPB Carpet \$390k, Hospital Sheet Vinyl \$5M, OPB Sheet Vinyl \$800k, Energy Center Flooring \$150k*
- **Painting:** 5 bid packages Prequalification Stage
 - *Hospital Paint \$2.8M, OPB Paint \$840k, Energy Center Paint \$220k, Hospital Wall Coverings \$290k, OPB Wall Coverings \$196k*
- **Window Shades:** 2 bid packages Prequalification Stage
 - *Hospital \$400k, OPB \$150k*
- **Misc. Metals:** 4 bid packages Currently Advertising
 - *Hospital \$2.5M, OPB \$820k, Energy Center \$135k, Site \$520k*

4. Opportunities for Smaller, Local Subcontractors – Bid packages cont.

- **Additional smaller bid packages:**

- Lockers: 1 bid package Prequalification Stage
 - Hospital \$260k
- Display Systems: 1 bid package Prequalification Stage
 - Hospital \$180k
- Wheelchair Lift: 1 bid package Prequalification Stage
 - Hospital \$25k
- Toilet Accessories: 2 bid packages Prequalification Stage
 - Hospital \$850k, OPB \$160k
- Projection Screen: 2 bid packages Prequalification Stage
 - Hospital \$65k, OPB \$10k

4. Opportunities for Smaller, Local Subcontractors - Database

- **Outreach to smaller contractors**
 - *Business names provided at prior community meetings*
 - *Made many calls to companies – various sources, including the Human Rights Commission (HRC) database*
 - *All contractors on the list were called to verify their interest and the value of bid packages they could bid on*
 - *In addition to vetting the subcontractors list we also called each contractor from the list who showed interest to inform them of the prequalification meetings and bid dates*

4. Opportunities for Smaller, Local Subcontractors - Database

- **Outreach to smaller contractors – continued**
 - *45 Local companies were contacted that represented the packages broken into multiple bid packages for Masonry, Ceramic Tile, Flooring, Painting, Window Shades, Misc. Metals*
 - *11 of the 45 companies responded and attended the mandatory pre-bid meetings*
 - *8 of the 11 companies submitted pre-qualification packages*
 - *4 of the 8 companies are prequalified for Tiling, Painting and Casework*
 - *The other 4 are still under review by DPR for Miscellaneous Metals, Window Shades and Interior Glazing*

5. Other Community Engagement

- DPR hired a front desk receptionist and labor foreman – the result of direct community referrals
- Interim resource added to assist in vetting the name-call list during this interim period
- Project has engaged THREE construction administration interns from the South of Market Employment Center/Mission Hiring Hall Construction Administrative Training Program
- Peggy Johnson, Senior Project Accountant on Mission Bay Hospitals Project, appointed to work on outreach to local businesses for goods and services. peggy.johnson@ucsfmedctr.org

5. Other Progress cont'd

- The RFP for a Community Construction Outreach Project Manager has been issued by UCSF's Community Relations Department. It relates to construction workforce development for all UCSF projects, including the Mission Bay Hospitals Project. Please refer to www.BidSync.com for more information.
- The Request # is 1104-003. If assistance is needed with BidSync to view the proposal please contact 1-800-990-9339.
- All questions and answers will be posted on BidSync.

6. Other Agenda Items

7. Questions/Discussion

8. Next meeting:

June 9, 2011

2 – 4 pm

**Mission Bay Genentech Hall
Room N-114, first floor**